

## EMBANKMENT WEST - MANCHESTER



Location  
**Manchester**

Client  
**Sir Robert McAlpine**

Value  
**£10 million**

Duration  
**56 weeks**

---

# PROJECT DESCRIPTION

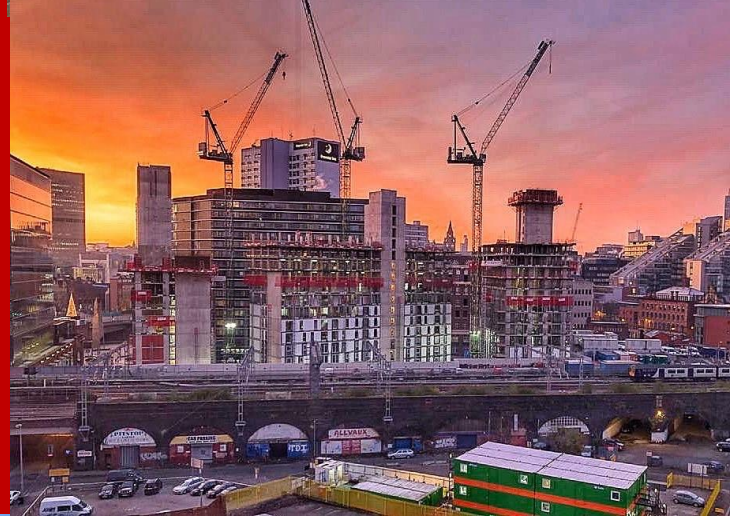
---

Appointed by Sir Robert McAlpine for the concrete works package, encompassing the delivery of three towers at Embankment West, a mixed-use development in Manchester city centre.

The concrete works commenced, following the demolition of several brick-built arches as part of the railway viaduct structure which also formed some of the platforms for the Manchester Exchange Railway Station, removing 22,000t of rubble and waste.

The Embankment West scheme comprised 356 private rental apartments and 147 medium term aparthotel units across three towers. The towers were 17, 15 and 17 storeys respectively, each served by its own core with extended travel distance. Inside the structure, revealed 166,000 ft<sup>2</sup> of a Grade A office space, with largely column-free 19,633 ft<sup>2</sup> floor plates. Each floor of the building presented a stunning view across the River and city.

All three blocks were programmed in simultaneous building sequence, which required a strategic programme of works, carefully considering labour and material resource throughout.



---

## UNIQUE FEATURES

---

- Logistically challenging city centre location
- Three blocks programmed in simultaneous building sequence
- Complex crane strategy required for two tower cranes over three blocks